



Masies Empordà

XIV century farmhouse for sale with 3.000m2 built and 250 hectares of land. Located in the town of Castellterçol, Moyanès region, province of Barcelona. Spain.



A 14th century farmhouse with subsequent extensions in the 15th and 17th centuries, with 3.000m2 built, it is surrounded by 250 hectares of its own land, of which 230 are of forest and 20 of cultivated fields in production. Located in the municipality of Castelltarçol, province of Barcelona in the region of Moyanés.

It has been recently restored following the architectural style of the time and respecting the essence of this type of constructions so peculiar as well as extraordinary.

The house is distributed in three floors and several annexes:

[Ver más información sobre esta propiedad en nuestra página web](#)

Ref: 1137

Price: 3975000.00 €

Locality: [BARCELONES](#)

Type of property: [MASIAS PROPERTY](#)

[CASTLE / GREAT PROPERTIES](#)

Property classification: [For sale](#)

Construction: 3000 m2

Plot: 2500000 m2

Bathrooms: 5

Bedrooms: 7

Additional characteristics: Vistas al mar
Piscina
Garaje



Calificación energética



Masies Empordà

+34 972 620 112 +34 606 213 800 +34 619 075 119
info@masiesemporda.com - www.masiesemporda.com



Masies Empordà

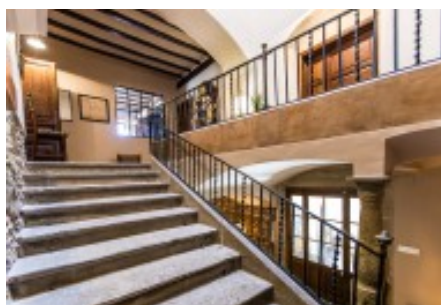
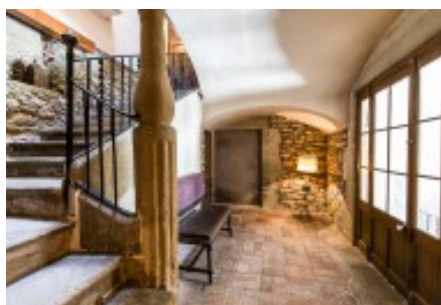


Masies Empordà

+34 972 620 112 +34 606 213 800 +34 619 075 119
info@masiesemporda.com - www.masiesemporda.com



Masies Empordà

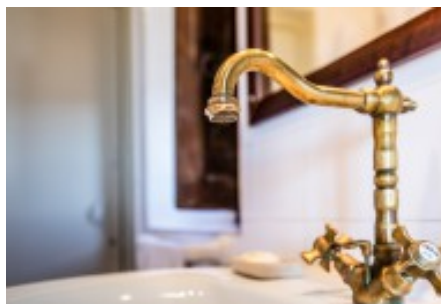
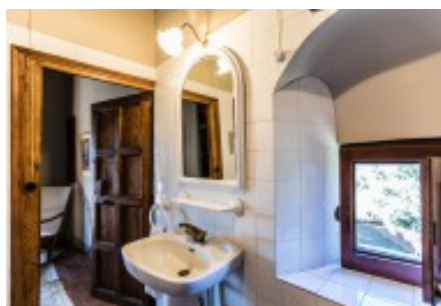


Masies Empordà

+34 972 620 112 +34 606 213 800 +34 619 075 119
info@masiesemporda.com - www.masiesemporda.com



Masies Empordà

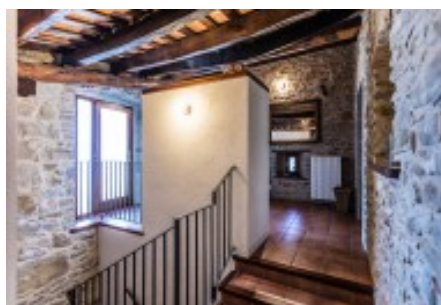


Masies Empordà

+34 972 620 112 +34 606 213 800 +34 619 075 119
info@masiesemporda.com - www.masiesemporda.com



Masies Empordà



Masies Empordà

+34 972 620 112 +34 606 213 800 +34 619 075 119
info@masiesemporda.com - www.masiesemporda.com



Masies Empordà



Masies Empordà

+34 972 620 112 +34 606 213 800 +34 619 075 119
info@masiesemporda.com - www.masiesemporda.com