



Masies Empordà

Cataloged house, located between Girona and La Bisbal. Girones region. Gerona. Spain.



Pairal cataloged house, located between Gerona and Bisbal.

Spread over three floors.

Ground floor: Several vaulted rooms.

Second floor: Large room and spacious rooms distribute.

third floor: Buahardilla-Attic.

Define haystack use. Intended as an independent housing.

Draft approved and paid as well as all licenses processed to divide the house into six homes. Each of them with private garden or terrace and separate entrances.

Recently it has been executed consolidation works and cover the entire building.

Possibility of communal garden area with pool.

Very interesting for investors.

Location

In the historic center of Lluçà village

Ref: 2009

Price: 700000.00 €

Locality: [GIRONES](#)

Type of property: [MASIAS PROPERTY](#)

[RUIN TO REFORM](#)

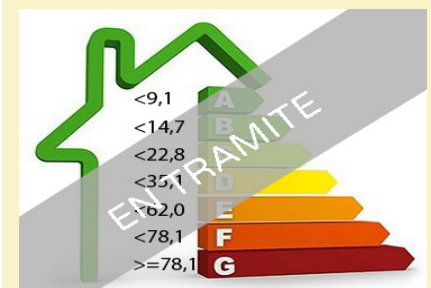
[STONE HOUSE](#)

Property classification: [For sale](#)

Construction: 1100 m2

Plot: 850 m2

Additional characteristics: Garaje



Calificación energética



Masies Empordà

+34 972 620 112 +34 606 213 800 +34 619 075 119
info@masiesemporda.com - www.masiesemporda.com



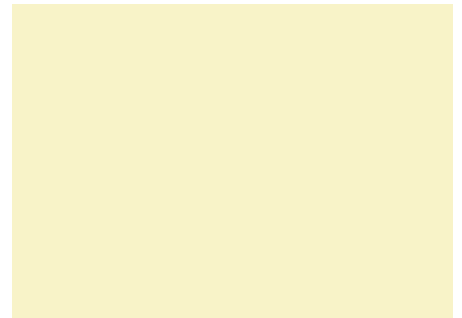
Masies Empordà

(L'Estartit)

Distance to Girona city: 10 minutes by car

Distance to Girona's airport: 20 minutes by car

[Ver más información sobre esta propiedad en nuestra página web](#)

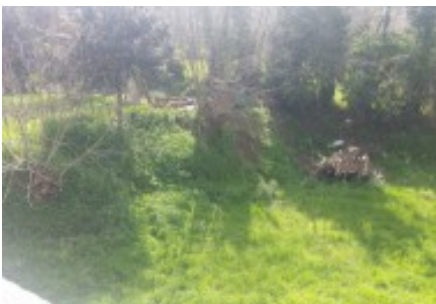


Masies Empordà

+34 972 620 112 +34 606 213 800 +34 619 075 119
info@masiesemporda.com - www.masiesemporda.com



Masies Empordà



Masies Empordà

+34 972 620 112 +34 606 213 800 +34 619 075 119
info@masiesemporda.com - www.masiesemporda.com