



*Masies Empordà*

## Senyorial principis house of XVII segle



Manor house from the early seventeenth century. Exquisitely restored in full with fine wood and high quality materials to preserve the authenticity of its origins.

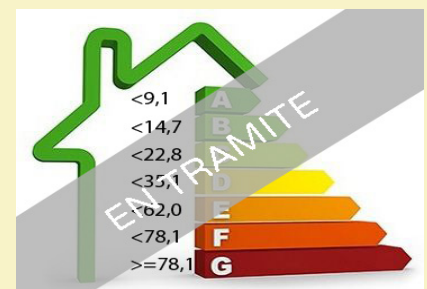
Located in the center of the village within the walled area where the ancient castle was. A Romanesque church with a strong Gothic and Baroque chairs feature the eastern part of town. Its streets and squares of Romanesque and Gothic architecture popular acquire its heyday in the Middle Ages to be declared as the venue for weekly village market.

The house has 720 m2 and 175 m2 of terraces and patios, it is divided into three levels:

Ground floor: entrance hall with Catalan vault, two double rooms, machine room, storage, cellar, bathroom, large indoor heated pool with jacuzzi and a dressing room with bathroom and showers.

[Ver más información sobre esta propiedad en nuestra página web](#)

**Ref:** 2000  
**Price:** 1250000.00 €  
**Locality:** [BAIX EMPORDÀ](#)  
**Type of property:** [STONE HOUSE](#)  
**Property classification:** [Sold properties](#)  
**Construction:** 720 m2  
**Plot:** 400 m2  
**Bathrooms:** 8  
**Bedrooms:** 8  
**Additional characteristics:** Piscina  
Garaje



Calificación energética

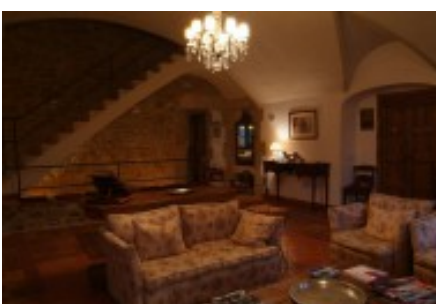


*Masies Empordà*

+34 972 620 112 +34 606 213 800 +34 619 075 119  
info@masiesemporda.com - www.masiesemporda.com



# Masies Empordà



# Masies Empordà

+34 972 620 112 +34 606 213 800 +34 619 075 119  
info@masiesemporda.com - www.masiesemporda.com