



Masies Empordà

Impressive Masia Pairal dated in XIV with two stone towers of the fifteenth century.



Pairal farmhouse dating from the XIV, with an area of 4000 m² is a manor house and exceptional importance. The farm is forty hectares of forest and four of this are fields. The house has two towers, one at each end of the farmhouse, the square tower dating from the sixteenth century is in the southern and another circular dated in the nineteenth century in the north.

This structurally well-armed, but needs internal reforms and adequacy of space to our times, as well as upgrading the facilities of electricity, water, etc.

The house is divided into three floors.

Ground Floor: Remarkable chapel dedicated to Santa Carmen built and dated in 1718. Stables with vaulted roof, carefully designed and crafted stone finishes.

Stables for cattle, seven rooms for different animal types, which retain the authenticity of the time.

[Ver más información sobre esta propiedad en nuestra página web](#)

Ref: 1334

Price: 3000000.00 €

Locality: [BAIX EMPORDÀ](#)

Type of property: [MASIAS PROPERTY](#)

[CASTLE / GREAT PROPERTIES](#)

Property classification: [For sale](#)

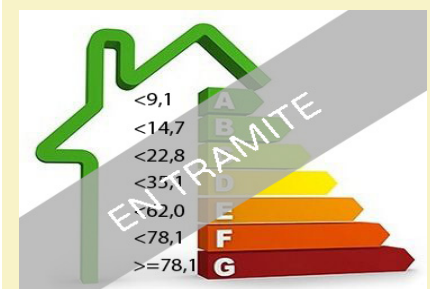
Construction: 4000 m²

Plot: 400000 m²

Bathrooms: 2

Bedrooms: 5

Additional characteristics: Piscina
Garaje



Calificación energética



Masies Empordà

+34 972 620 112 +34 606 213 800 +34 619 075 119
info@masiesemporda.com - www.masiesemporda.com



Masies Empordà

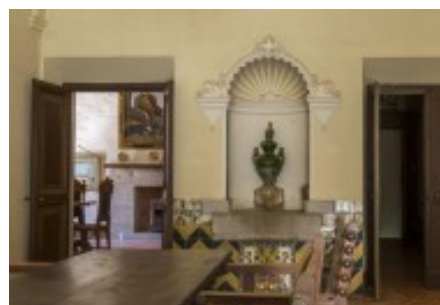
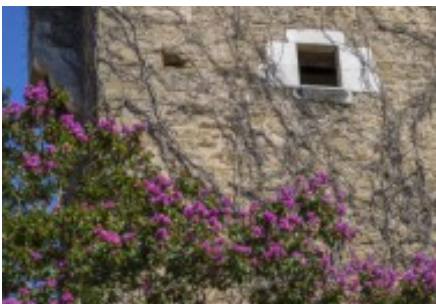


Masies Empordà

+34 972 620 112 +34 606 213 800 +34 619 075 119
info@masiesemporda.com - www.masiesemporda.com



Masies Empordà

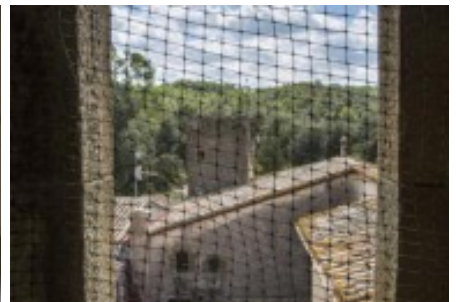


Masies Empordà

+34 972 620 112 +34 606 213 800 +34 619 075 119
info@masiesemporda.com - www.masiesemporda.com



Masies Empordà



Masies Empordà

+34 972 620 112 +34 606 213 800 +34 619 075 119
info@masiesemporda.com - www.masiesemporda.com